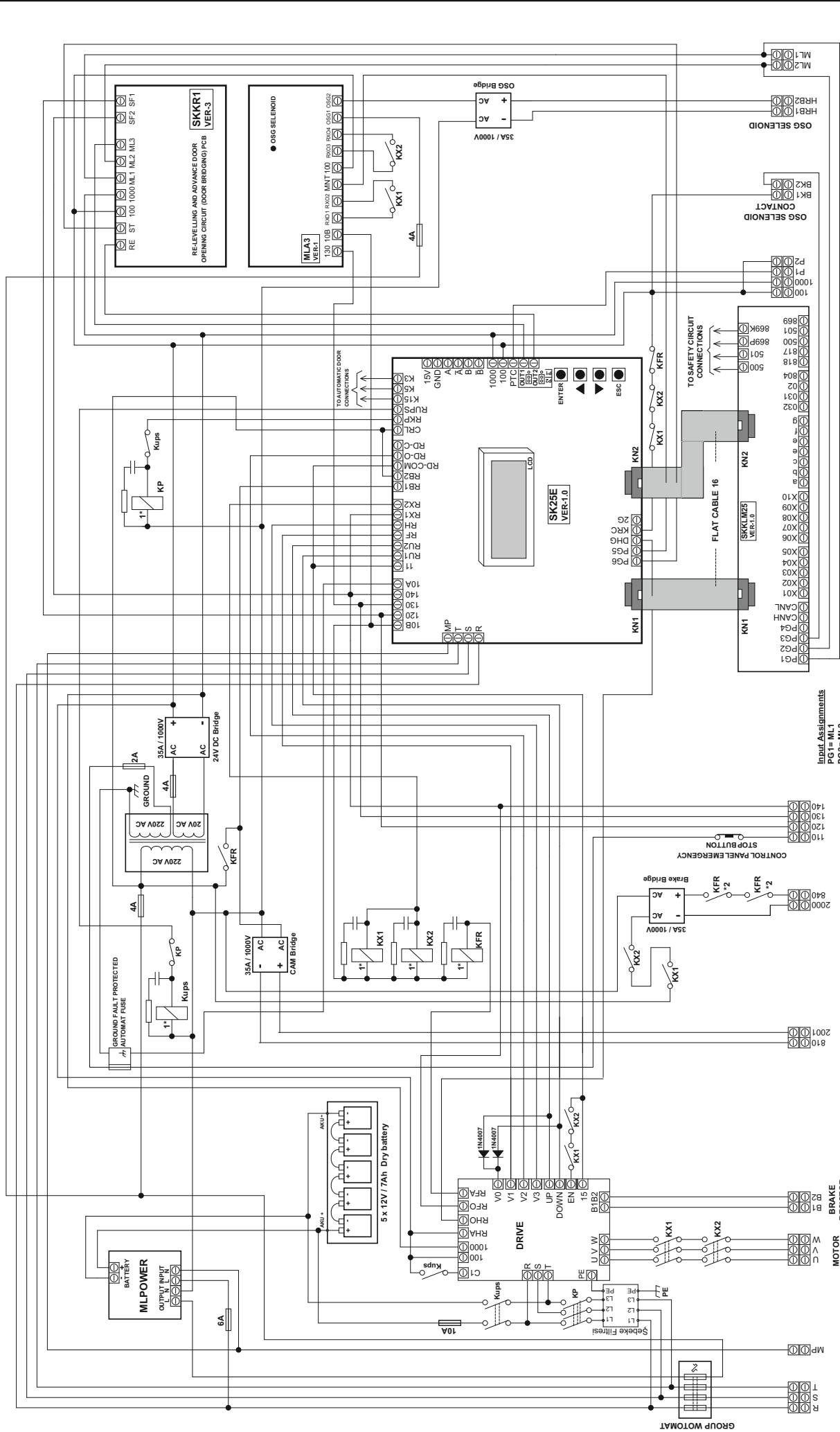


- 1* Contactors must be of AC-3 class with 220VAC coils !
 RC filters must be connected across the coils of contactors !
 2**These contacts must be the main contacts of RU1 and RU2 contactors !

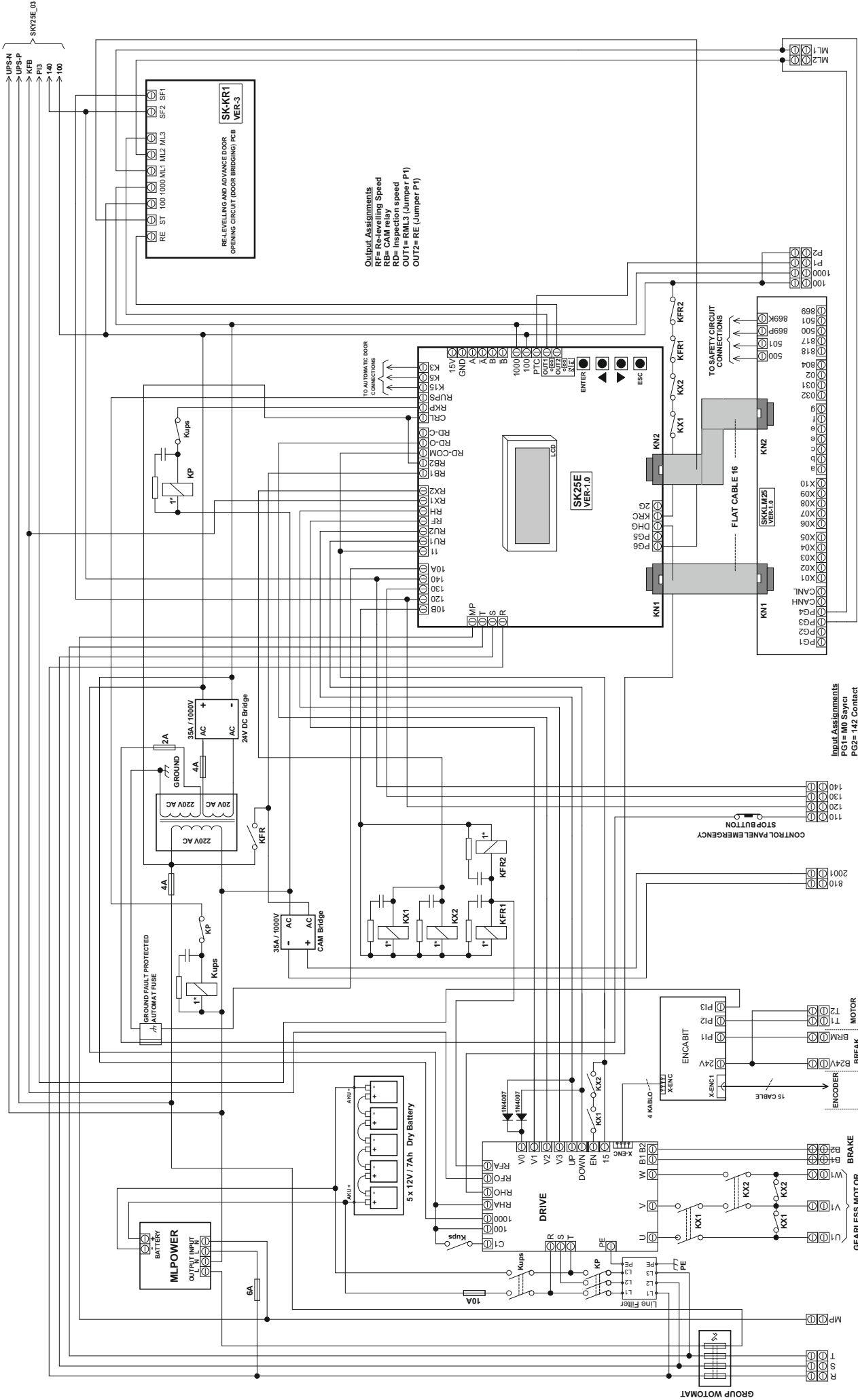
Output Assignments
 RF= Re-leveling Speed
 RB= CAM relay speed
 RE= Re-leveling speed
 OUT1= RML3 (Jumper P1)
 OUT2= RE (Jumper P1)



Input Assignments
 PG1= ML1
 PG2= ML2
 PG3= OSG contact
 PG4= Assignable
 PG5= MNT of MLK3 card
 PG6= ST of MLK1 card

SKY 25E	
VERSION : 1.0	CONTROL PANEL CONNECTIONS WITH DRIVE
DATE : 01.08.2020	AND 60 VDC UPS EMERGENCY RESCUE SYSTEM
SCHEME NO :	(FOR 190V OSG SELENOID)

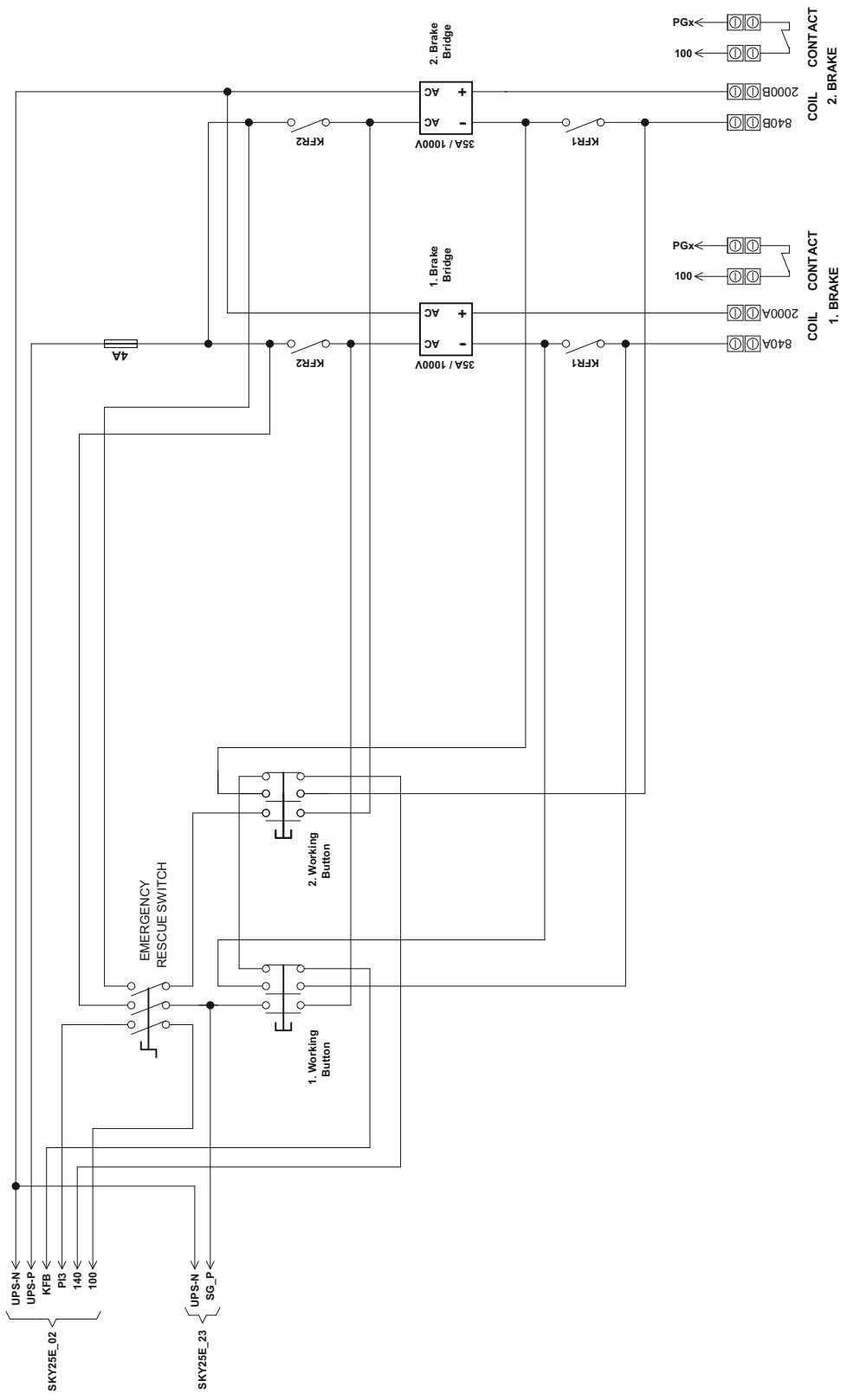
- 1* Contactors must be of AC-3 class with 220VAC coils !
- RC filters must be connected across the coils of contactors !
- 2* These contacts must be the main contacts of RU1 and RU2 contactors !



Output Assignments
 RF= Re-leveling Speed
 RB= CAM relay
 RD= Inspection speed
 OUT1= RML3 (Jumper P1)
 OUT2= RE (Jumper P1)

SKY 25E	VERSION : 1.0	CONTROL PANEL CONNECTIONS WITH DRIVE
	DATE : 01.08.2020	AND 60 VDC UPS EMERGENCY RESCUE SYSTEM
	SCHEME NO :	(FOR GEARLESS MACHINE)

Input Assignments
 PG1= M0 Safety
 PG2= 142 Contact
 PG3= ML1
 PG4= ML2
 PG5= Assignable
 PG6= ST of MLKR1 card



SKY 25E

VERSION : 1.0

DATE : 01.08.2020

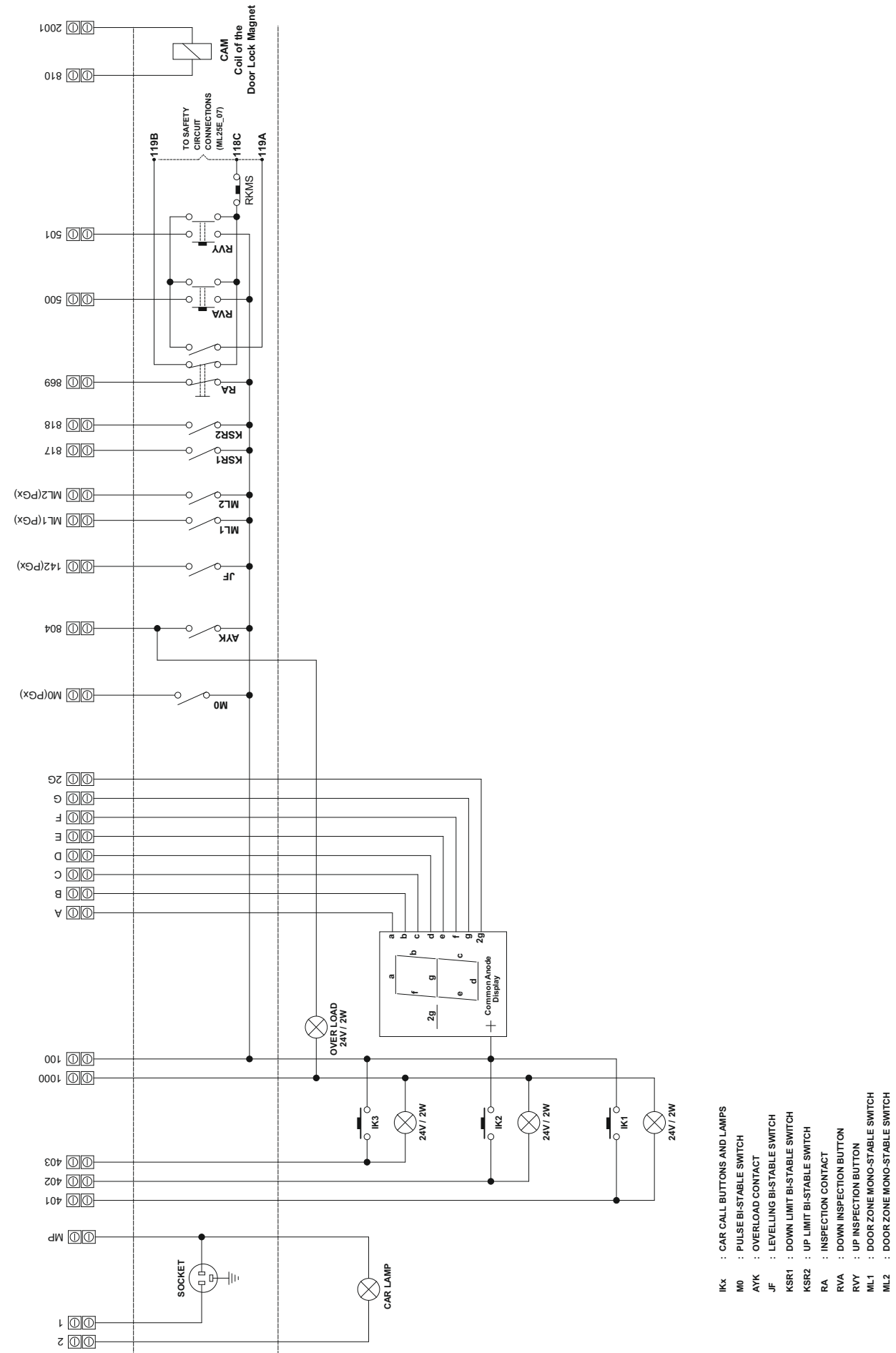
SCHEME NO :

BRAKE CONNECTION
FOR GEARLESS MACHINE

CONTROL PANEL

TOP OF THE CAR

INSIDE THE CAR



- IKx : CAR CALL BUTTONS AND LAMPS
- M0 : PULSE BI-STABLE SWITCH
- AYK : OVERLOAD CONTACT
- JF : LEVELLING BI-STABLE SWITCH
- KSR1 : DOWN LIMIT BI-STABLE SWITCH
- KSR2 : UP LIMIT BI-STABLE SWITCH
- RA : INSPECTION CONTACT
- RVA : DOWN INSPECTION BUTTON
- RVP : UP INSPECTION BUTTON
- ML1 : DOOR ZONE MONO-STABLE SWITCH
- ML2 : DOOR ZONE MONO-STABLE SWITCH

SKY 25E

VERSION : 1.0

DATE : 01.08.2020

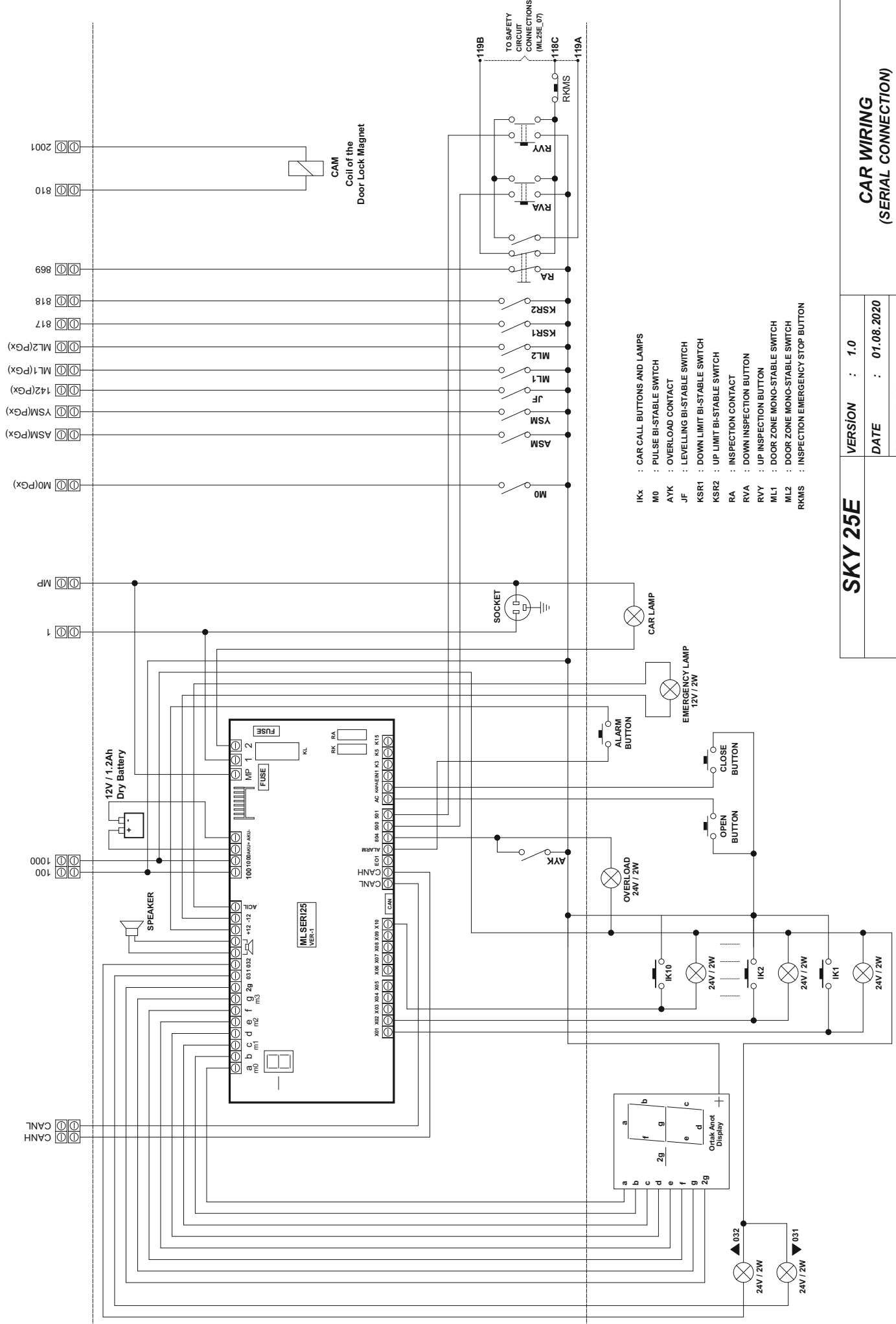
SCHEME NO :

CAR WIRING

CONTROL PANEL

TOP OF THE CAR

INSIDE THE CAR



- 2001
- 810
- 869
- 818
- 817
- ML2(PGx)
- ML1(PGx)
- 142(PGx)
- YSM(PGx)
- ASM(PGx)
- M0(PGx)
- MP
- 1
- 1000
- 100
- CANL
- CANH

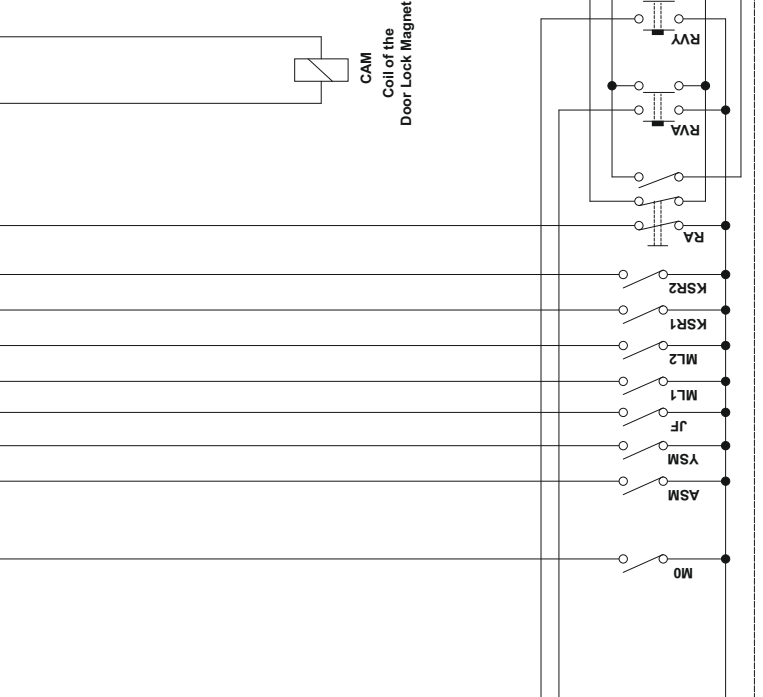
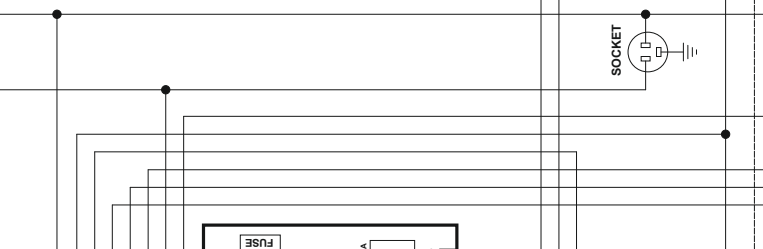
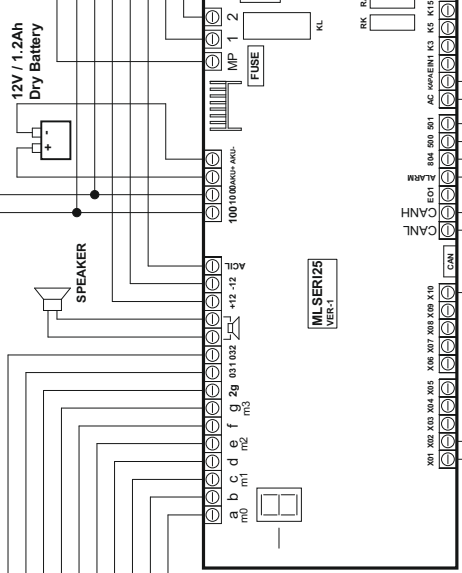
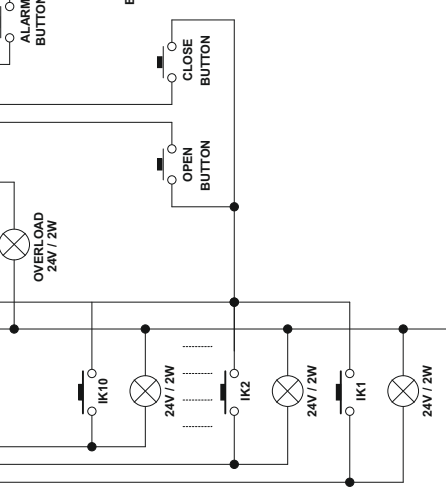
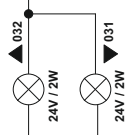
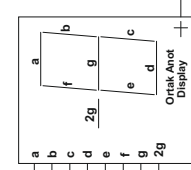
CAM
Coil of the
Door Lock Magnet

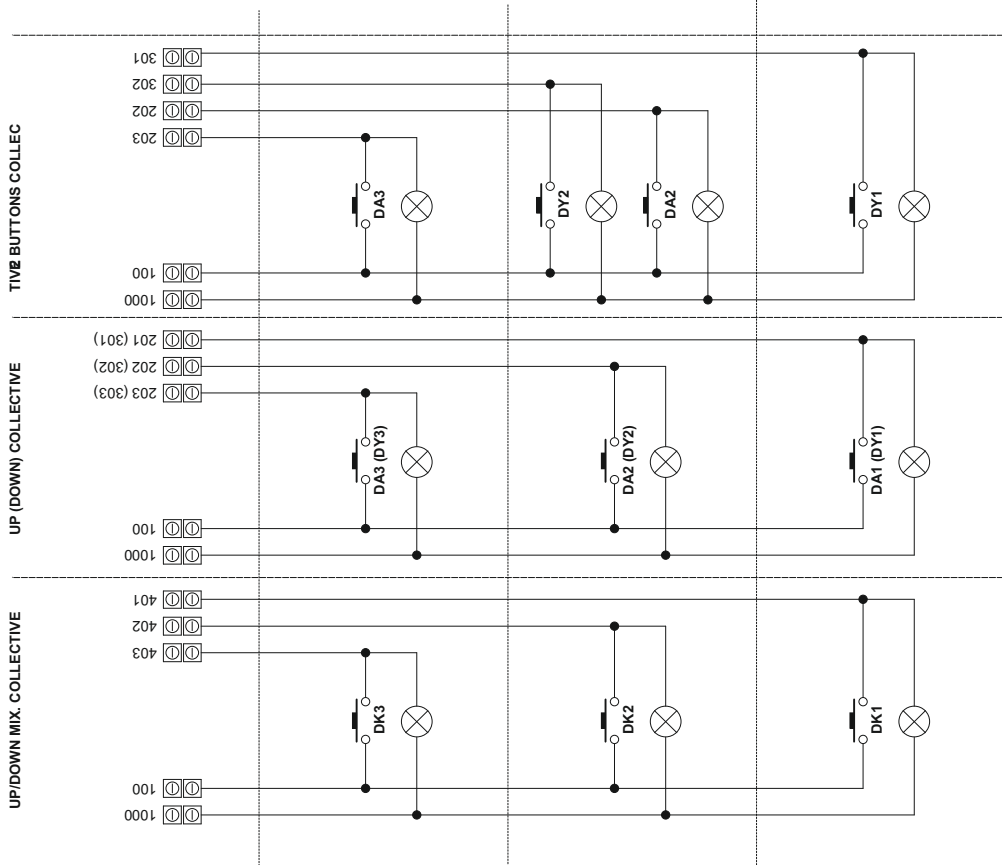
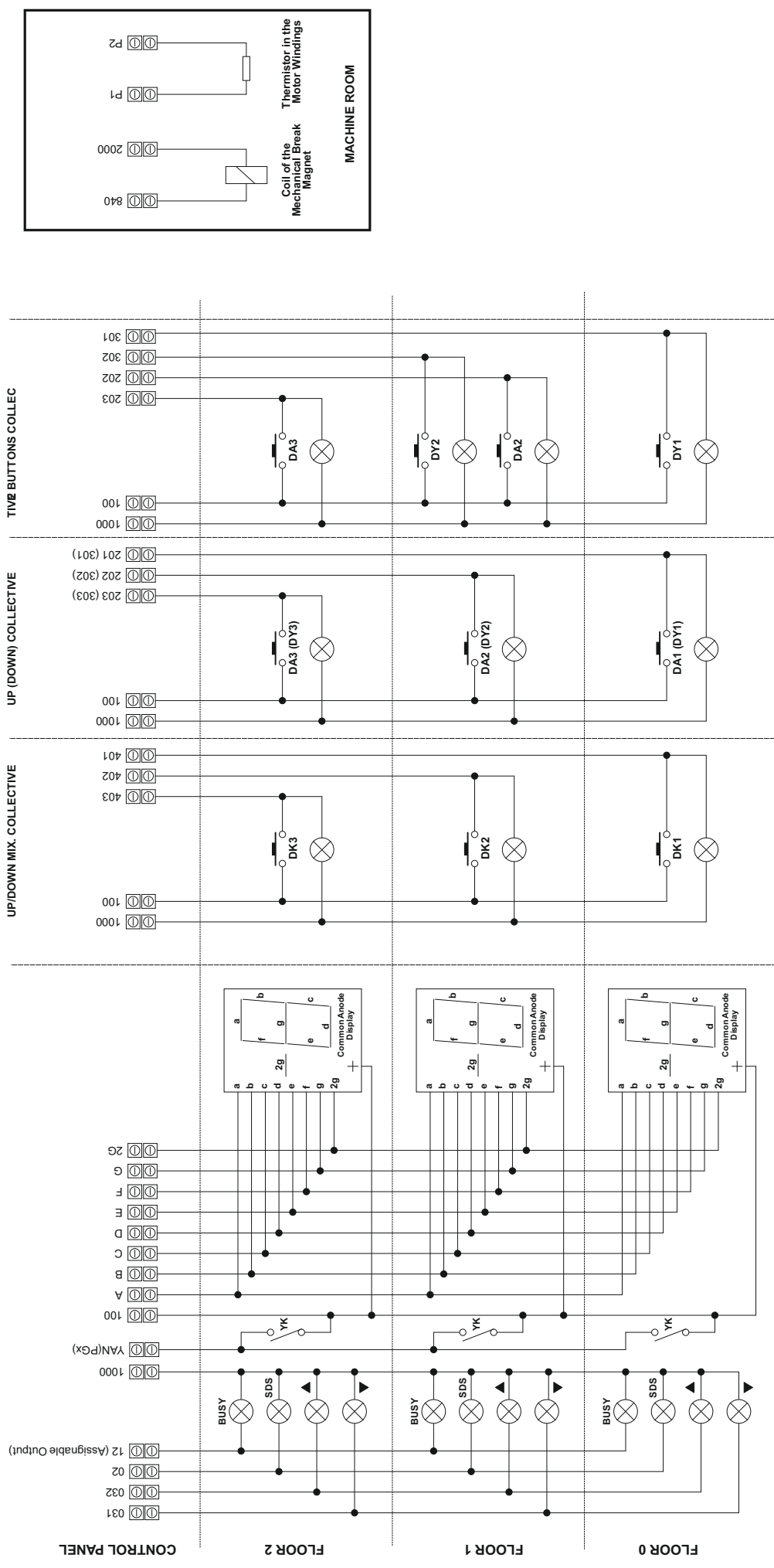
119B
TO SAFETY
CIRCUIT
CONNECTIONS
(MIL25E_07)
118C
119A

- IKx : CAR CALL BUTTONS AND LAMPS
- M0 : PULSE BI-STABLE SWITCH
- AYK : OVERLOAD CONTACT
- JF : LEVELLING BI-STABLE SWITCH
- KSR1 : DOWN LIMIT BI-STABLE SWITCH
- KSR2 : UP LIMIT BI-STABLE SWITCH
- RA : INSPECTION CONTACT
- RVA : UP INSPECTION BUTTON
- RVY : UP INSPECTION BUTTON
- ML1 : DOOR ZONE MONO-STABLE SWITCH
- ML2 : DOOR ZONE MONO-STABLE SWITCH
- RKMS : INSPECTION EMERGENCY STOP BUTTON

SKY 25E	VERSION : 1.0
	DATE : 01.08.2020
	SCHEME NO :

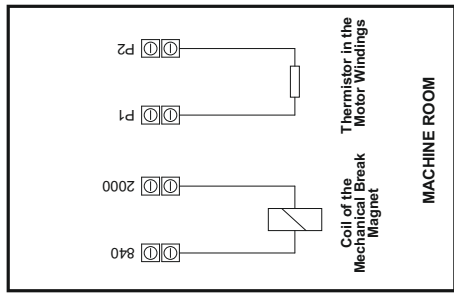
CAR WIRING
(SERIAL CONNECTION)



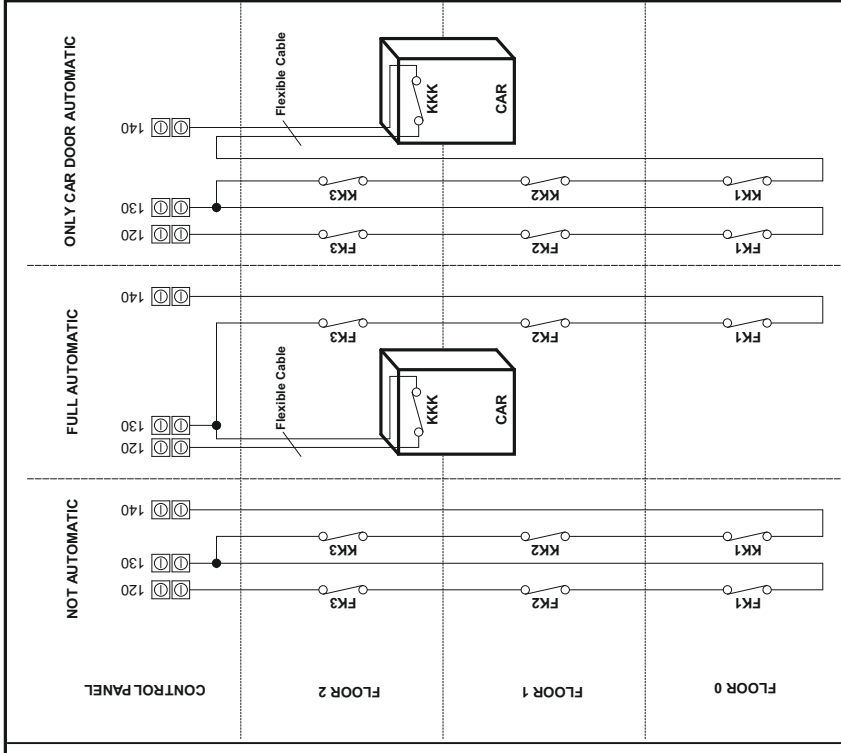


CALL CONNECTIONS

- DKx : CALL BUTTONS AND LAMPS
- DAX : DOWN CALL BUTTONS AND LAMPS
- DYx : UP CALL BUTTONS AND LAMPS
- SDS : OUT OF SERVICE LAMP
- YK : FIRE CONTACT
- : 24 VOLT - MAX 2 WATT LAMP

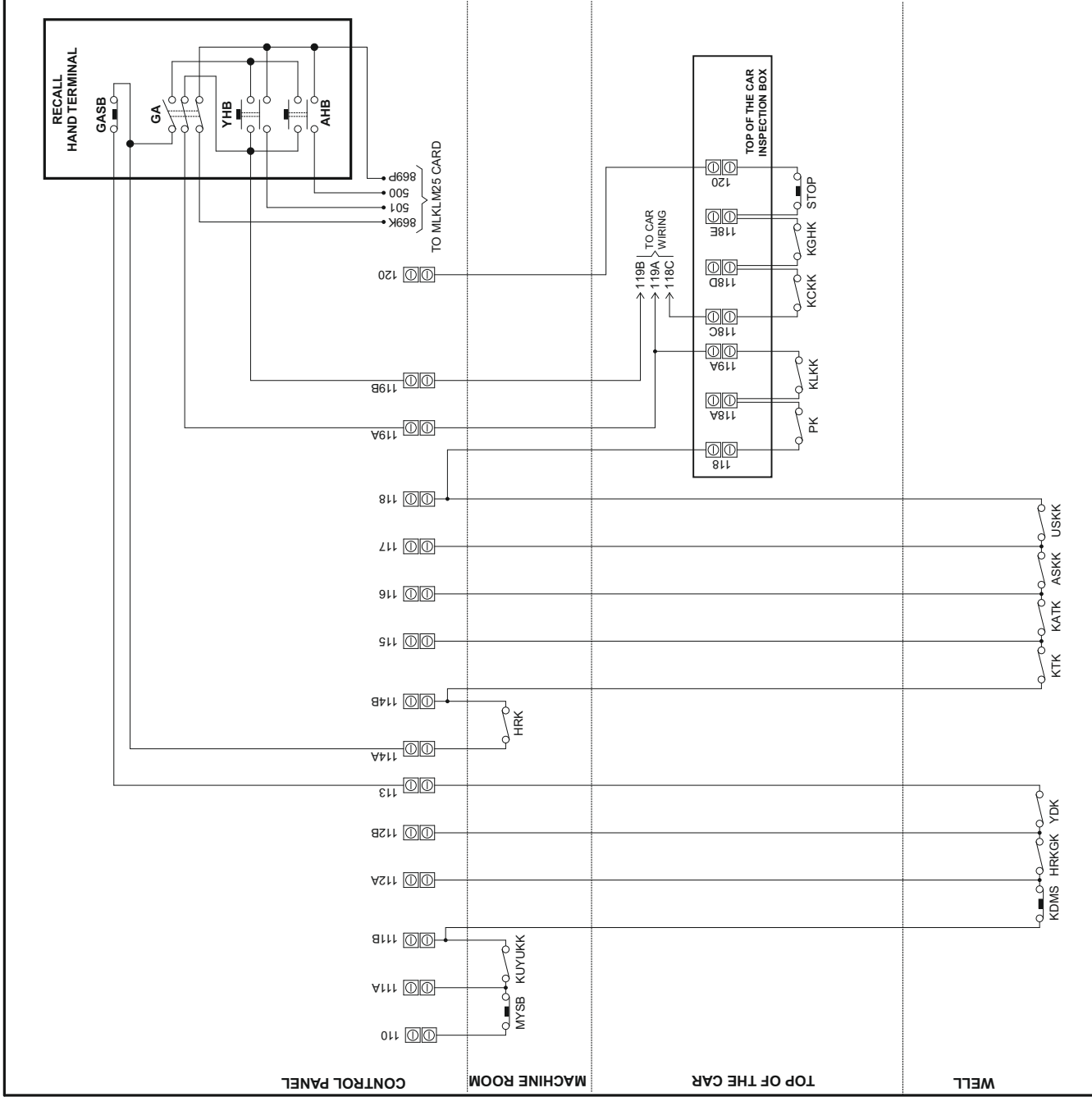


SKY 25E	VERSION : 1.0	FLOOR WIRING
	DATE : 01.08.2020	MECHANICAL BREAK AND THERMISTOR CONNECTIONS
	SCHEME NO	



FKx : DOOR SOCKET SWITCHES
 KKx : DOOR LOCK SWITCHES
 KKK : CAR DOOR SWITCH

MYSB : TRACTION GEAR STOP BUTTON
 KUYUKK : WELL ACCESS CONTACT
 KDMS : PIT EMERGENCY STOP BUTTON
 HRKGK : TENSION WEIGHT CONTACT
 YDK : RESERVE CONTACT
 HRK : OVERSPEED GOVERNOR CONTACT
 KTK : BUFFER CONTACT
 KATK : COUNTER WEIGHT BUFFER CONTACT
 ASKK : PIT END LIMIT SWITCH CONTACT
 USKK : ULTIMATE LIMIT SWITCH CONTACT
 PK : SAFETY GEAR
 KLKK : CAR LIMIT SWITCH CONTACT
 KKKK : CAR TOP COVER CONTACT
 KGHK : CAR SLACK ROPE CONTACT
 STOP : CAR STOP BUTTON
 GASB : GET BACK EMERGENCY STOP BUTTON
 GA : GET BACK CONTACT
 YHB : UP MOVEMENT BUTTON
 AHB : DOWN MOVEMENT BUTTON



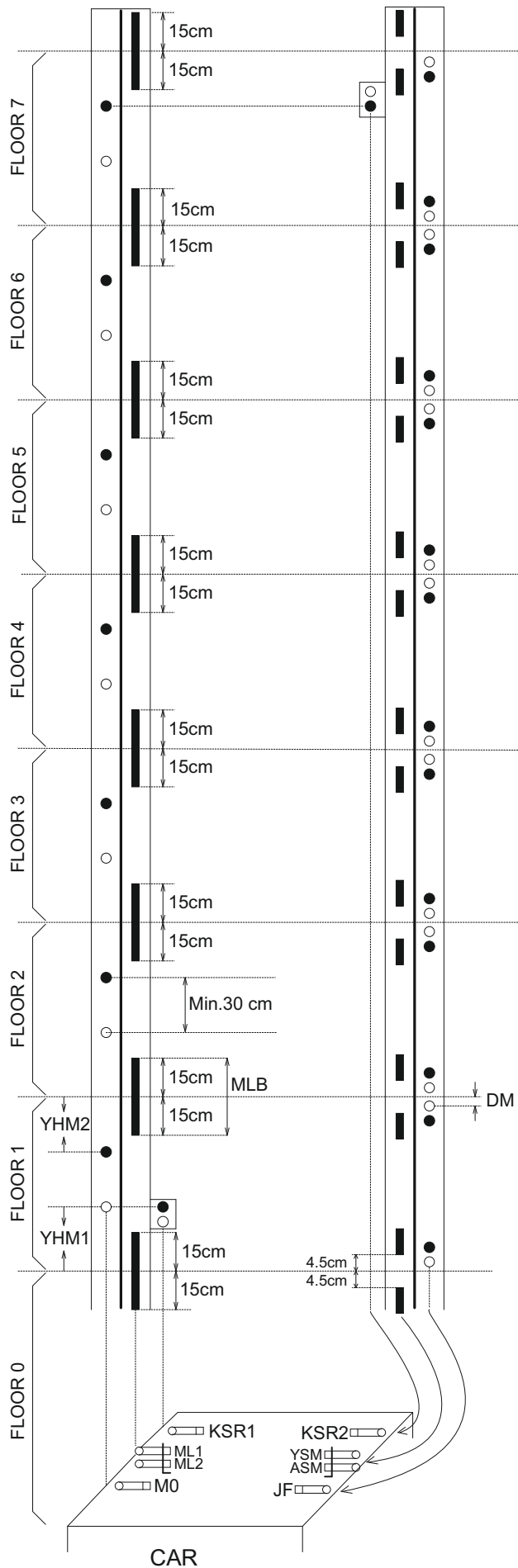
SKY 25E

VERSION : 1.0

DATE : 01.08.2020

SCHEME NO

SAFETY CIRCUIT CONNECTIONS



- M0 : PULSE BI-STABLE SWITCH
- JF : LEVELLING BI-STABLE SWITCH
- KSR1 : DOWN LIMIT BI-STABLE SWITCH
- KSR2 : UP LIMIT BI-STABLE SWITCH
- ML1 : DOOR ZONE MONO-STABLE SWITCH
- ML2 : DOOR ZONE MONO-STABLE SWITCH
- DM : STOPPING DISTANCE
- YHM1 : LOW SPEED DISTANCE IN DOWN DIRECTION
- YHM2 : LOW SPEED DISTANCE IN UP DIRECTION
- MLB : DOOR ZONE
- YSM : UP RE-LEVELLING MONO-STABLE SWITCH
- ASM : DOWN RE-LEVELLING MONO-STABLE SWITCH

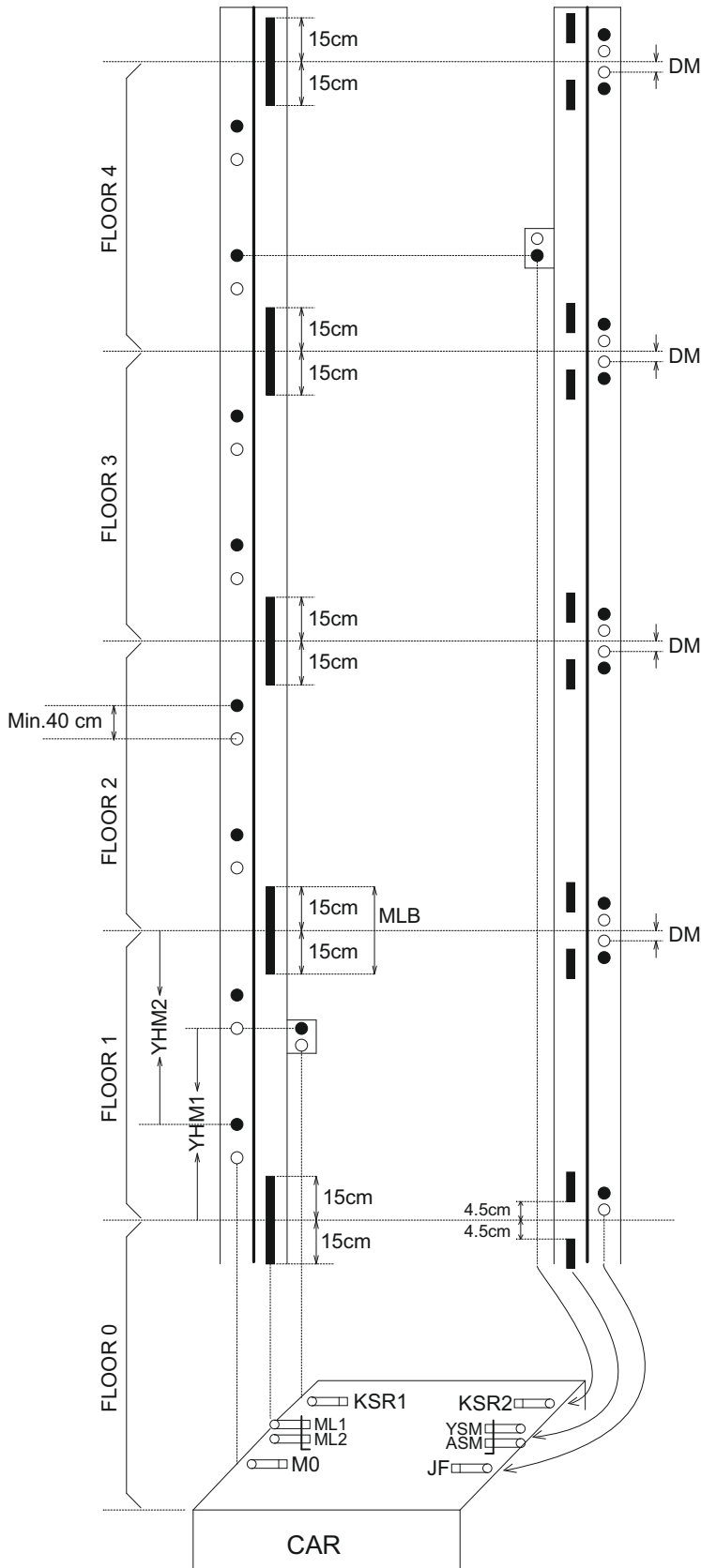
- : BI-STABLE SWITCH IS CLOSED
- : BI-STABLE SWITCH IS OPEN

30cm : RIBBON MAGNET FOR DOOR ZONE

10cm : RIBBON MAGNET FOR RE-LEVELLING ZONE

CAUTION ! ML1,ML2,ASM,YSM Mono-Stable switches must be suitable to 14.1.2.5 article at EN81-1 standard.

SKY25E	VERSION : 1.0	2 MAGNETS M0 PULSE SYSTEM WITH ADVANCE DOOR OPENING OR RE-LEVELLING
	DATE : 01.08.2020	
	SCHEME NO :	



- M0 : PULSE BI-STABLE SWITCH
- JF : LEVELLING BI-STABLE SWITCH
- KSR1 : DOWN LIMIT BI-STABLE SWITCH
- KSR2 : UP LIMIT BI-STABLE SWITCH
- ML1 : DOOR ZONE MONO-STABLE SWITCH
- ML2 : DOOR ZONE MONO-STABLE SWITCH
- DM : STOPPING DISTANCE
- YHM1 : LOW SPEED DISTANCE IN DOWN DIRECTION
- YHM2 : LOW SPEED DISTANCE IN UP DIRECTION
- MLB : DOOR ZONE
- YSM : UP RE-LEVELLING MONO-STABLE SWITCH
- ASM : DOWN RE-LEVELLING MONO-STABLE SWITCH

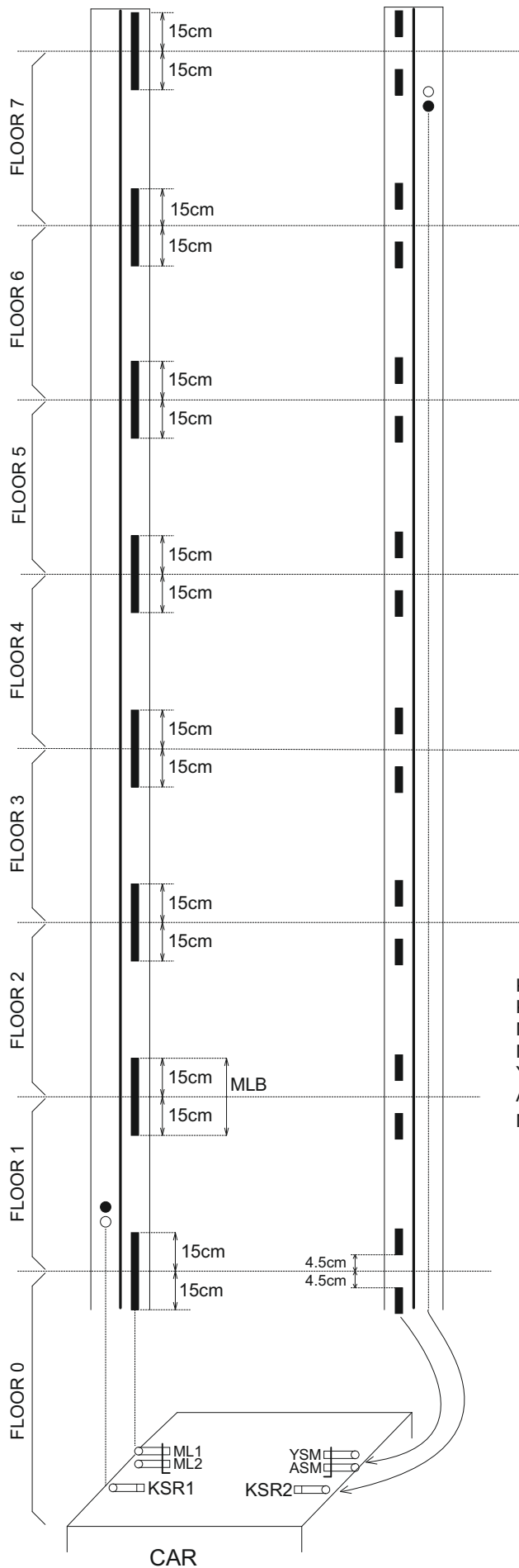
- : BI-STABLE SWITCH IS CLOSED
- : BI-STABLE SWITCH IS OPEN

30cm : RIBBON MAGNET FOR DOOR ZONE

10cm : RIBBON MAGNET FOR RE-LEVELLING ZONE

CAUTION ! ML1,ML2,ASM,YSM Mono-Stable switches must be suitable to 14.1.2.5 article at EN81-1 standard.

SKY25E	VERSION : 1.0	4 MAGNETS M0 PULSE SYSTEM WITH ADVANCE DOOR OPENING OR RE-LEVELLING
	DATE : 01.08.2020	
	SCHEME NO :	



- KSR1 : DOWN LIMIT BI-STABLE SWITCH
- KSR2 : UP LIMIT BI-STABLE SWITCH
- ML1 : DOOR ZONE MONO-STABLE SWITCH
- ML2 : DOOR ZONE MONO-STABLE SWITCH
- YSM : UP DIRECTION LEVELLING MONO-STABLE SWITCH
- ASM : DOWN DIRECTION LEVELLING MONO-STABLE SWITCH
- MLB : DOOR ZONE

P.S.: IT'S NOT NEEDED TO USE ASM AND YSM WHERE THE ROPE CREEPAGE IS NOT EXIST.

- : BI-STABLE SWITCH IS CLOSED
- : BI-STABLE SWITCH IS OPEN

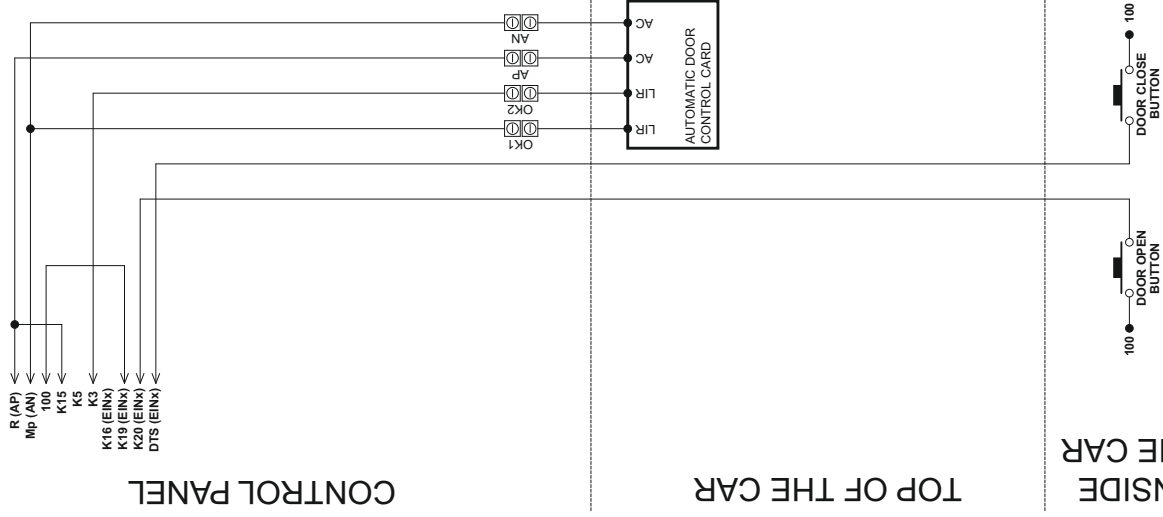
30cm : RIBBON MAGNET FOR DOOR ZONE

10cm : RIBBON MAGNET FOR ADVANCED DOOR OPENNING ZONE

CAUTION ! ML1 and ML2 Mono-Stable switches must be suitable to 14.1.2.5 article at EN81-1 standard.

SKY25E	VERSION : 1.0	SHAFT LEARNING MAGNET CONFIGURATION WITH ADVANCED DOOR OPENNING AND RE-LEVELLING
	DATE : 01.08.2020	
	SCHEME NO :	

1 AUTOMATIC DOOR CONNECTIONS
RUNNING WITH CAM SIGNAL

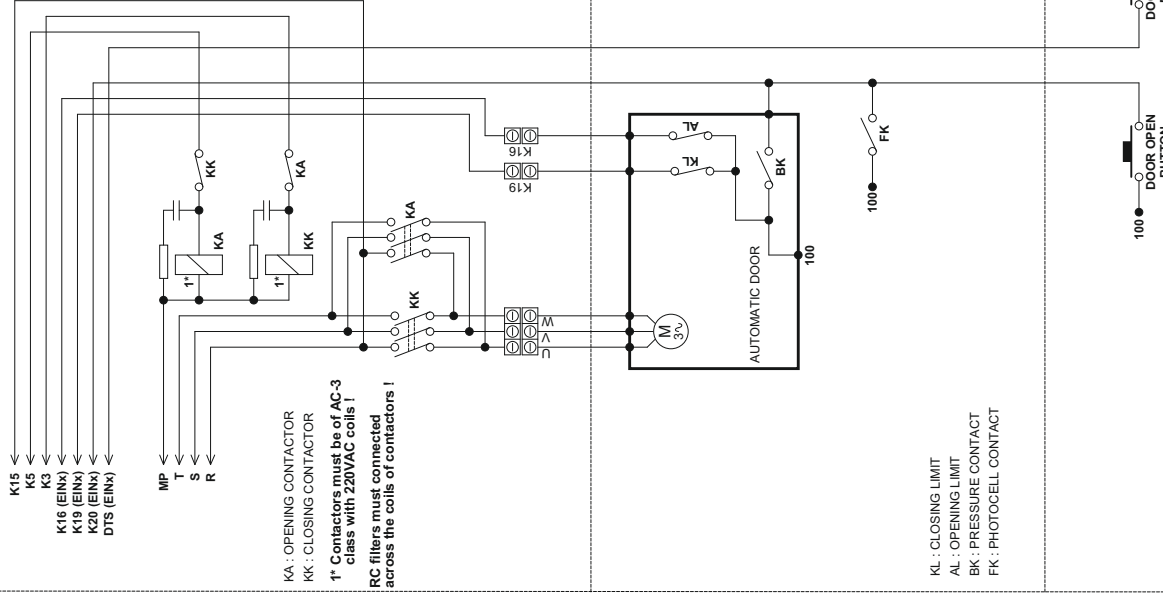


CONTROL PANEL

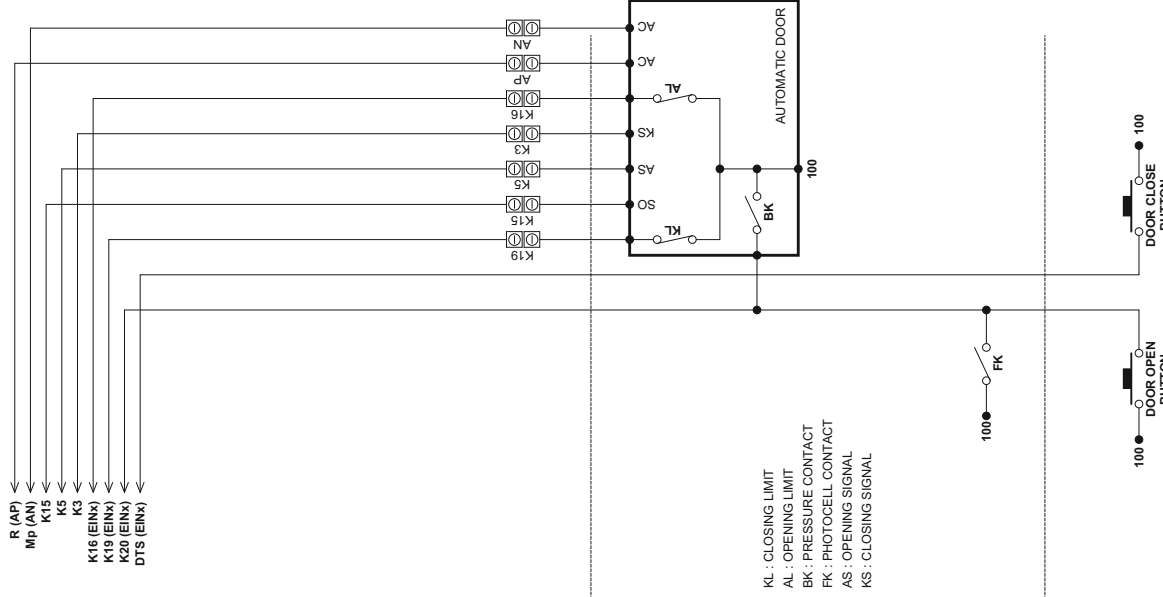
TOP OF THE CAR

INSIDE
THE CAR

2 AUTOMATIC DOOR WITH 380VAC
3 PHASE MOTOR CONNECTIONS



3 AUTOMATIC DOOR CONNECTIONS
INCLUDING THEIR OWN CONTROL



SKY 25E

VERSION : 1.0

DATE : 01.08.2020

SCHEME NO

AUTOMATIC DOOR CONNECTIONS

TOP OF THE CAR CONNECTION

PARALLEL

	CALL TERMINALS AT MLKLM25 BOARD
1	İÇ / DIŞ KARIŞIK TOPLAMA (2 - 10 KAT) 401-401-401-401-401 402-402-402-402-402 403-403-403-403-403 404-404-404-404-404 301-405-405-405-405 302-301-201-406-406 303-302-202-407-407 202-303-203-408-408 203-304-204-409-409 204-305-205-410-410 X01 X02 X03 X04 X05 X06 X07 X08 X09 X10
2	AŞAĞI YÖN TOPLAMA (2 - 5 KAT)
3	YUKARI YÖN TOPLAMA (2 - 5 KAT)
4	2 BUTON TOPLAMA (2 - 4 KAT)

2XX = DOWN CALLS
3XX = UP CALLS
4XX = CAR CALLS

TOP OF THE CAR CONNECTION

SERIAL

	CALL TERMINALS AT MLKLM25 BOARD	CALL TERMINALS AT MLSERI25 BOARD
1	İÇ / DIŞ KARIŞIK TOPLAMA (2 - 10 KAT) 301-301-201-401 302-302-202-402 303-303-203-403 304-304-204-404 305-305-205-405 202-306-206-406 203-307-207-407 204-308-208-408 205-309-209-409 206-310-210-410 X01 X02 X03 X04 X05 X06 X07 X08 X09 X10	401-401-401-401-401 402-402-402-402-402 403-403-403-403-403 404-404-404-404-404 405-405-405-405-405 406-406-406-406-406 407-407-407-407-407 408-408-408-408-408 409-409-409-409-409 410-410-410-410-410 X01 X02 X03 X04 X05 X06 X07 X08 X09 X10
2	AŞAĞI YÖN TOPLAMA (2 - 10 KAT)	
3	YUKARI YÖN TOPLAMA (2 - 10 KAT)	
4	2 BUTON TOPLAMA (2 - 6 KAT)	

SKY 25E

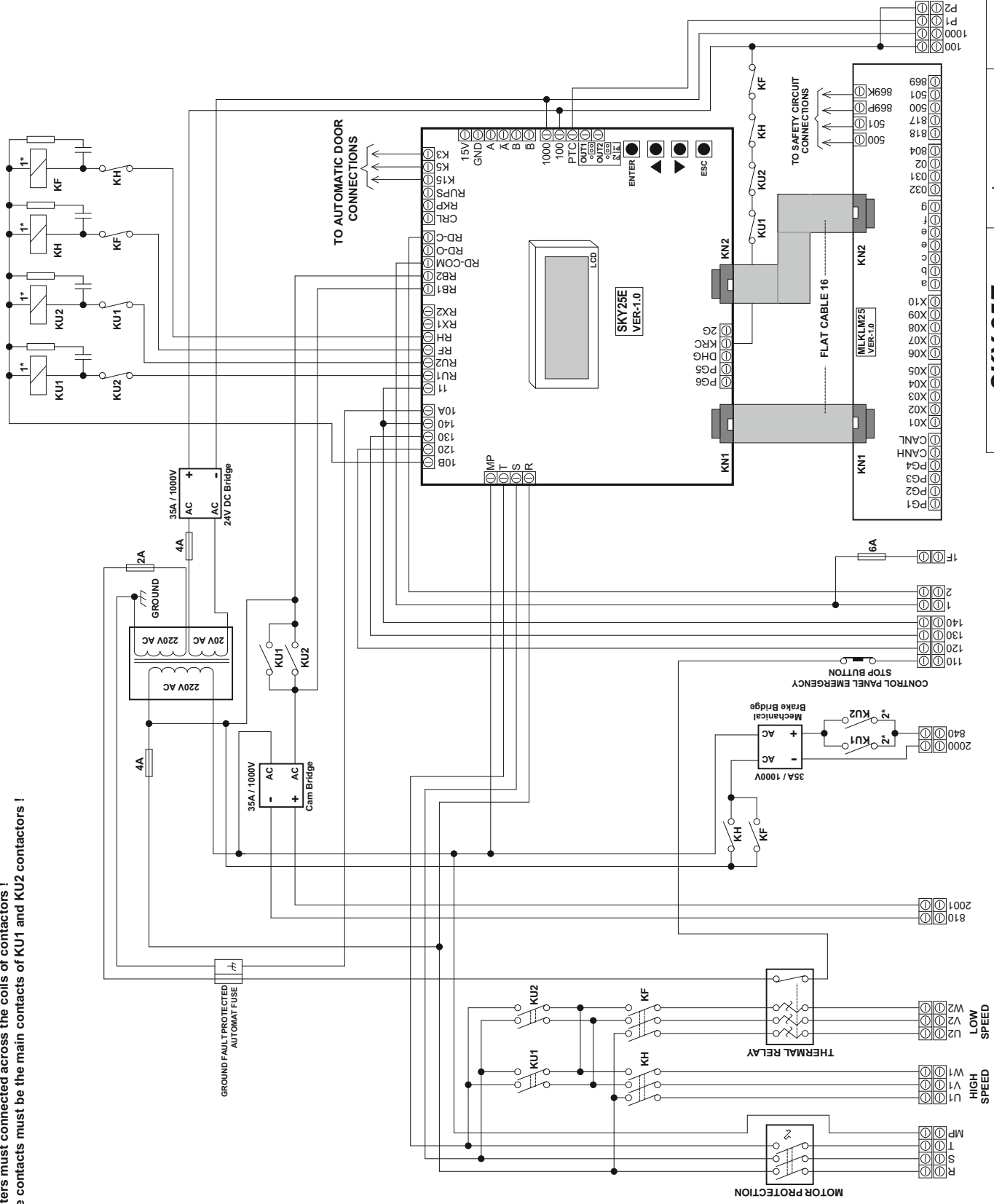
VERSION : 1.0

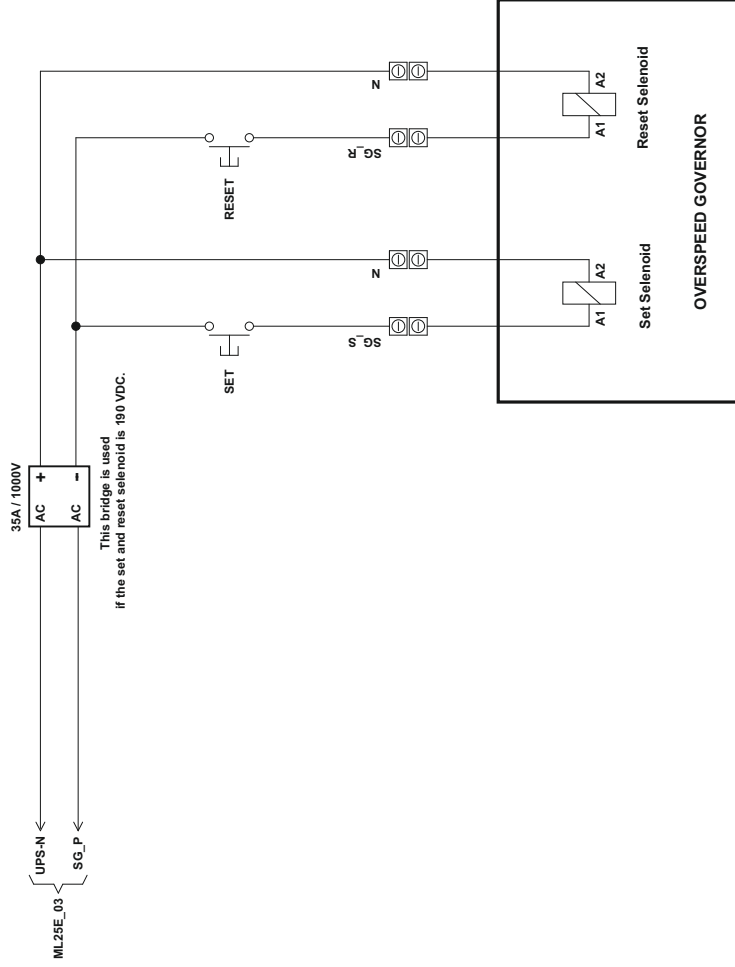
DATE : 01.08.2020

SCHEME NO

SKY 25E CALL DEFINITIONS

- 1* Contactors must be of AC-3 class with 220VAC coils !
RC filters must be connected across the coils of contactors !
- 2* These contacts must be the main contacts of KU1 and KU2 contactors !





SKY 25E

VERSION : 1.0

DATE : 01.08.2020

SCHEME NO

REMOTE CONTROL FOR
OVERSPEED GOVERNOR